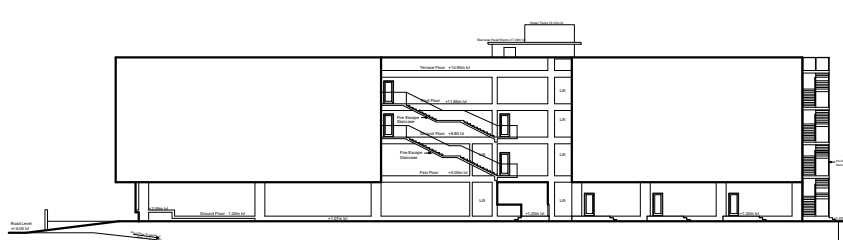


SECTION AT 'Y-Y'



WEST ELEVATION

K.SUDHEER & K.RAHUL

MADURAWADA :: VISAKHAPATNAM

BASEMENT FLOOR, SITE PLAN,
SECTION, ELEVATION & TOPO PLAN



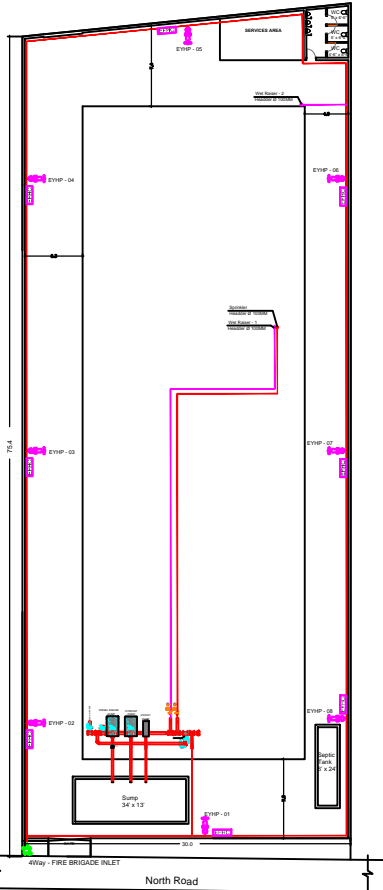
**FIRE FIGHTING PLAN SHOWING THE YARD HYDRANT,
FIRE BRIGADE INLET & FIRE PUMPS LAY OUT**

PLINTH AREA STATMENT IN SQ MTRS

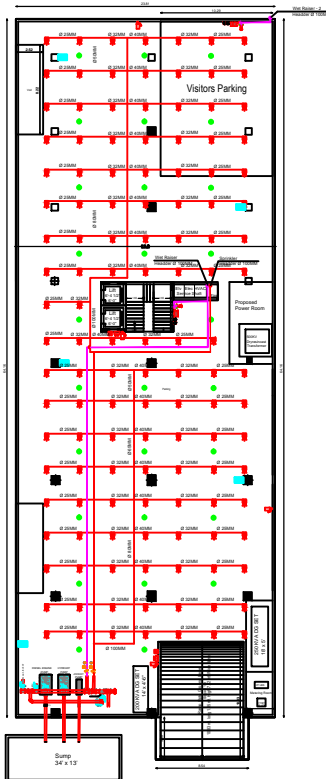
1	SITE AREA	----- Sq.M
2	BASEMENT FLOOR AREA	1561.20 Sq.M
3	GROUND FLOOR AREA	1027.11 Sq.M
4	FIRST FLOOR AREA	1168.09 Sq.M
5	SECOND FLOOR AREA	1320.02 Sq.M
6	THIRD FLOOR AREA	1024.24 Sq.M
7	TERRACE FLOOR AREA	49.14 Sq.M
	TOTAL AREA	6149.8 Sq.M

SET BACKS

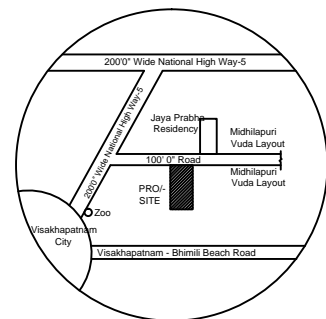
1	NORTH SIDE	7.3 M
2	SOUTH SIDE	7.4 M
3	EAST SIDE	5.3 M
4	WEST SIDE	4.0 M



SITE PLAN



BASEMENT FLOOR PLAN



LOCATION PLAN
Scale: NTS

1	HYDRANT PUMP (2850 LPM)	171 m ³
2	DIESEL PUMP (2850 LPM)	171 m ³
3	JOCKEY PUMP (180 LPM)	10.8 m ³
4	BOOSTER PUMP (900 LPM)	54 m ³

TOTAL ABSTRACT OF FIRE FIGHTING EQUIPMENT INSTALLED

S.No	FLOOR DETAIL	FIRE EXITING	HOSE REEL	WET RISER	HYDRANT	AUTO SPRINKLER	M C P	SMOKE DETECTOR	HEAT DETECTOR	HOOTER	HOSE BOX	WALL SPEAKER	CEILING SPEAKER	4WAY FIRE BRIGADE INLET
		QTY	QTY	QTY	QTY	QTY	QTY	QTY	QTY	QTY	QTY	QTY	QTY	QTY
1	BASEMENT FLOOR	4 Nos	2 Nos	2 Nos	2 Nos	127 Nos	2 Nos	----	28 Nos	2 Nos	2 Nos	5 Nos	----	----
2	GROUND FLOOR	6 Nos	2 Nos	2 Nos	2 Nos	66 Nos	5 Nos	----	5 Nos	2 Nos	----	13 Nos	----	----
3	FIRST FLOOR	3 Nos	2 Nos	2 Nos	2 Nos	85 Nos	4 Nos	30 Nos	----	4 Nos	2 Nos	----	13 Nos	----
4	SECOND FLOOR	4 Nos	2 Nos	2 Nos	2 Nos	109 Nos	5 Nos	29 Nos	----	5 Nos	2 Nos	----	14 Nos	----
5	THIRD FLOOR	3 Nos	2 Nos	2 Nos	2 Nos	85 Nos	5 Nos	22 Nos	----	5 Nos	2 Nos	----	12 Nos	----
6	SITE PLAN	----	----	2 Nos	8 Nos	----	----	----	----	----	8 Nos	----	----	1 No
	TOTAL	20 Nos	10 Nos	2 Nos	18 Nos	472 Nos	21 Nos	106 Nos	28 Nos	21 Nos	18 Nos	5 Nos	52 Nos	1 No

M.E.P. CONSULTANTS

K. L E E L A P R A S A D
CONSULTING ENGINEER
SUBHADRA ENGINEERING ENTERPRISE
49 - 52 - 1/7A, Santipuram :: Visakhapatnam -16
Phone 0891 - 2798167 Mobile 98481 93459
0891 - 2798675 98668 93459
MAIL leelaprasadk@yahoo.co.in
DATE 13.03.2020 Rev DATE 19.12.2020

ENGINEER	OWNER
STRUCTURAL ENGINEER	ARCHITECT